

How to pair a LINAK® Wireless handset

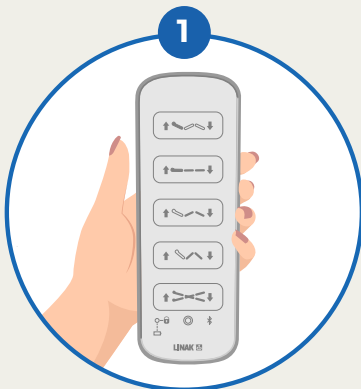


Double confirmation
beep - Pairing OK



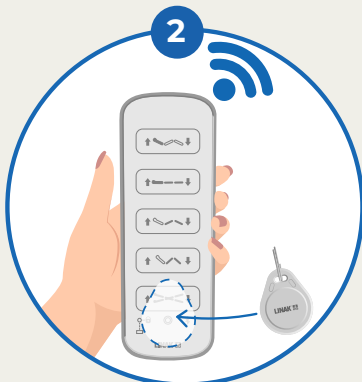
Beep
Beep

1



Move within two meters of
the bed / application.

2



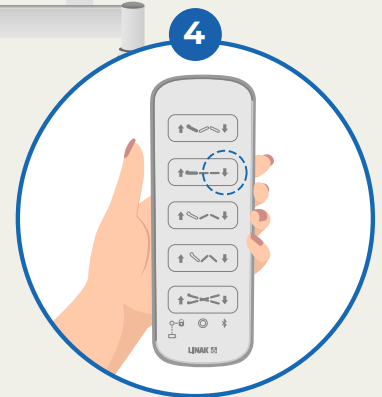
Enter Direct Pairing Mode by
activating key 1 and magnet
in 3 seconds.

3



Release key and magnet
and move closer to control
box until buzzer frequency
change from slow to fast.

4



Confirm pairing by
pushing key 1.