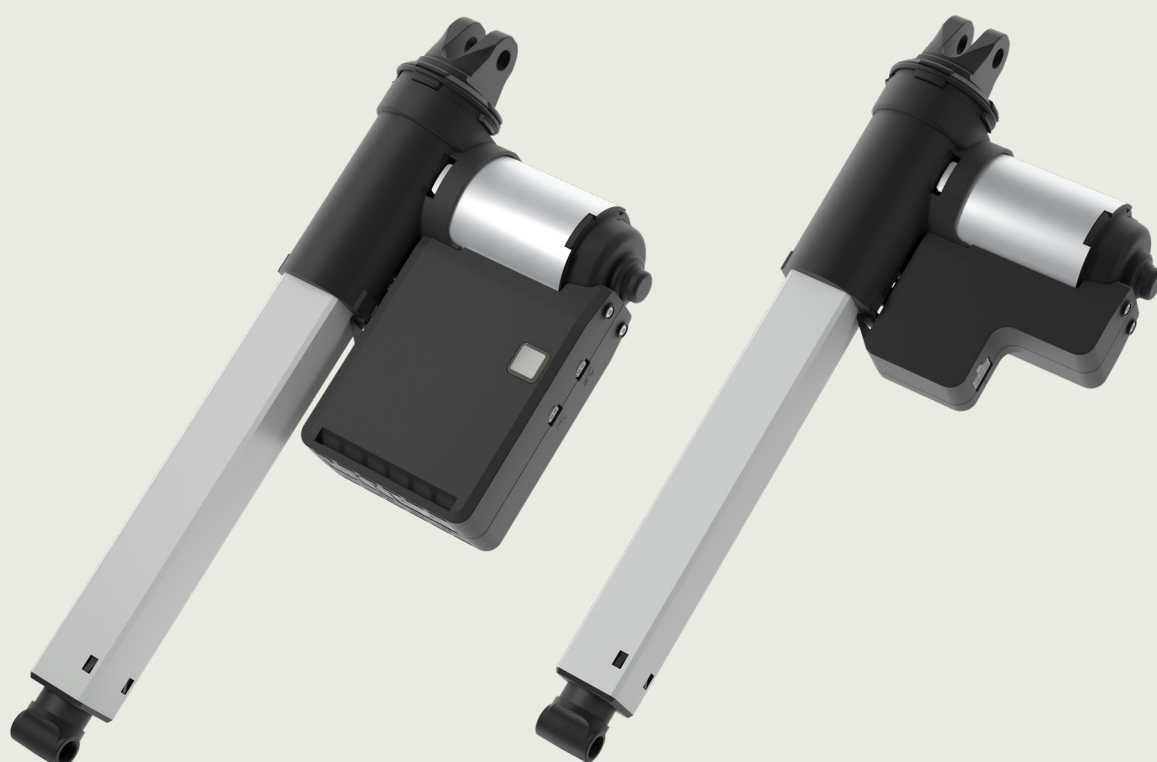


# LA18 IC Advanced Data Sheet



# LA18 IC Advanced

---

The LA18 IC Advanced system consists of an LA18 IC Advanced Master and an LA18 IC Advanced Follower and is a system specially developed for comfort beds. The actuators make for a very quiet, powerful, and sleek actuator system. As an option, it has a click-on back fixture making the mounting process simple and fast. The LA18 IC Advanced system supports wireless control via hand controls and the Bed Control App. Furthermore, the system supports connection of accessories like massage motor and extra Under Bed Light.



LA18 IC Advanced Master

LA18 IC Advanced Follower

---

## Features:

- 24-29 V DC supply with DC cable
- The "Master" actuator has an integrated control box
- The "Follower" actuator is connected to the Master with 6-pole minifit plug
- Load up to 6000 N in push
- Compact design with small installation dimensions
- Colour: Black (RAL 9005)
- Low noise level
- Favourite positions
- Built-in Bluetooth® Low Energy technology
- Integrated Under Bed Light (Placed on control box)
- Hall feedback

## Options:

- "Click-on" back fixture (Ø33.8 mm)
- Parallel drive of two LA18 Advanced systems

## Usage:

- Duty cycle: 10 %  $\approx$  2 minutes at continuous use followed by 18 minutes pause
- Ambient temperature: 5 to 40 °C
- Compatible with HOMELINE® wireless hand controls
- Compatible with SMPS001/002/006
- Compatible with LEDLIGHTRAIL001/002 and Massage Motors MD1000D7/MD1000D8
- Complies with UL 962
- Complies with FCC and IC

## Technical specifications

	Spindle pitch (mm)	Max. load [N]	Max. self-lock [N]
LA18 IC Advanced Master	4	6000	4800
LA18 IC Advanced Follower	4	6000	4800

Be aware, the LA18 has a mechanical spline and, thus, the actuator can only push.

**Ordering example:**

18	040	200	OC	OK	O	B	1	0	-	1	A	1	1	370	A2	C	0	0		
																			<b>Standard:</b>	0 = Standard
																			<b>Standard:</b>	0 = Standard
																			<b>Configuration:</b>	0 = Advanced Follower configuration C = Advanced Master configuration
																			<b>Type:</b>	A2 = Advanced Master (UBL top) A3 = Advanced Master (UBL bottom) B5 = Advanced Follower B5 design
																			<b>Install. Dim.:</b>	xxx = Min. (170 + stroke length) *
																			<b>Brake:</b>	1 = Brake in push
																			<b>Option:</b>	1 = 6000 N version
																			<b>Piston Rod Eye:</b>	A = Plastic Ø10.2 (solid)
																			<b>Back Fixture rotation:</b>	1 = Standard 2 = Turned 90°
																			<b>Back Fixture End:</b>	1 = Std. with slot Ø10,2 6 = Click-On Ø33,8
																			<b>Colour:</b>	– Black (RAL 9005)
																			<b>IP:</b>	0 = IPXX
																			<b>End Stop:</b>	1 = Signal Switch (E2)
																			<b>Motor Type:</b>	B = 24 V DC Normal
																			<b>Platform:</b>	0 = None (P0)
																			<b>Feedback:</b>	OK = Single Hall (F4)
																			<b>Safety:</b>	OC = Mec. Spline
																			<b>Stroke Length:</b>	037 = 37 mm 045 = 45 mm 048 = 48 mm 052 = 52 mm 075 = 75 mm 080 = 80 mm 092 = 92 mm 095 = 95 mm 097 = 97 mm 106 = 106 mm 115 = 115 mm 120 = 120 mm 152 = 152 mm 200 = 200 mm
																			<b>Spindle Pitch:</b>	040 = 4 mm
																			<b>Actuator Type:</b>	18 = LA18

\*: Control box (type) Bx: Min. installation dimension 218 mm  
Control box (type) Ax: Min. installation dimension 235 mm

Minimum order quantity is 108 pcs.



Be aware of the size of the control box when choosing the BID of the actuator



SMPS, connection cable, massage motors and hand control must be ordered separately.



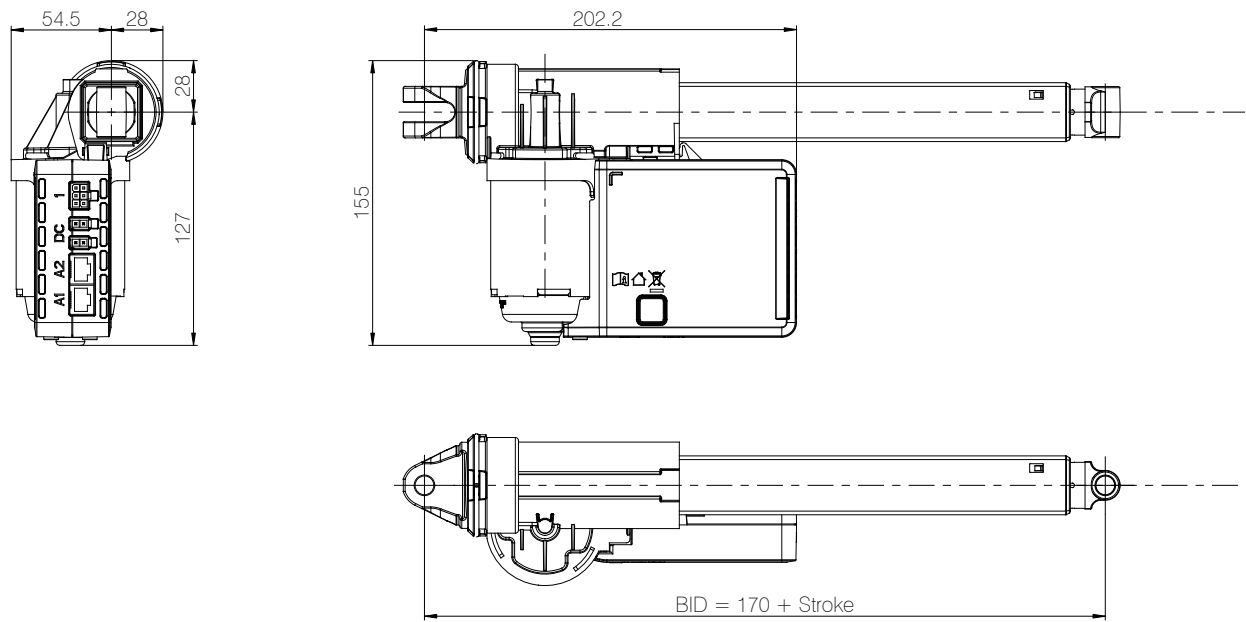
Other stroke lengths than the standard stroke lengths mentioned above requires a minimum quantity of 2,500 pcs/year. The stroke length must be in the interval 36 – 200 mm.



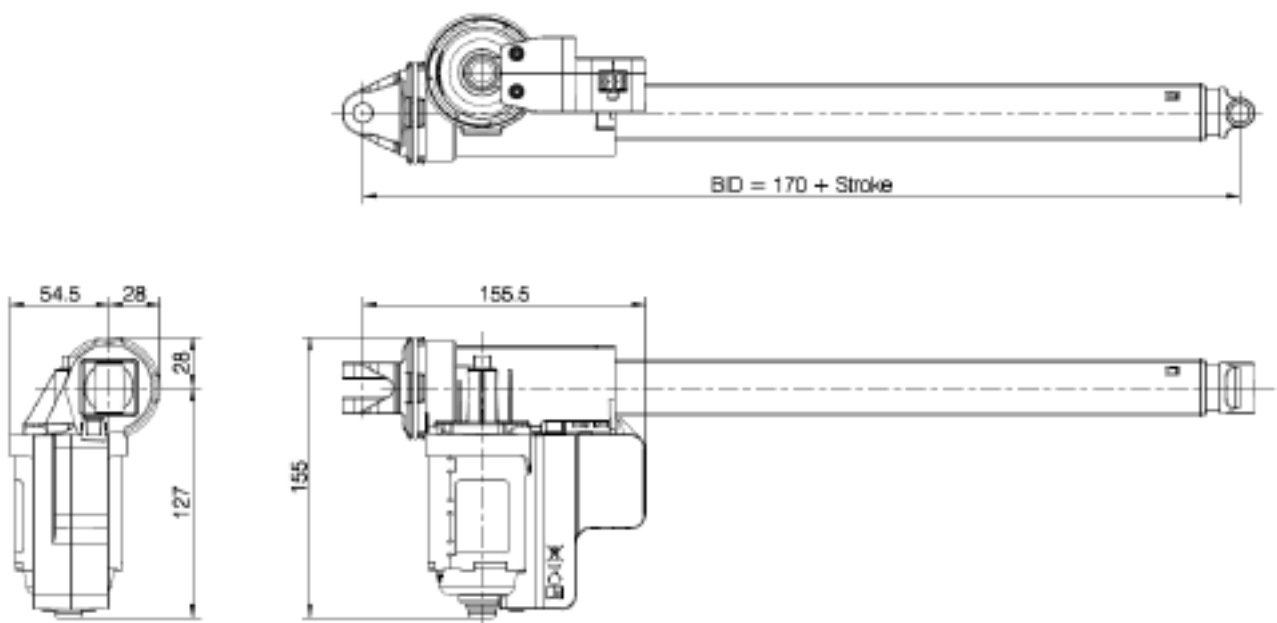
We highly recommend using the standard stroke lengths. If you order a special stroke length you need to be aware that the trail might change, especially when the actuator is not fully retracted. This variation in the trail can in typical use be up to  $\pm 5$  mm, in some cases more, and can only be reset by initialising the actuator again. This error occurs due to the use of single hall in the actuator and can cause unexpected positions or even damage of the application.

Dimensions

LA18 IC Advanced Master

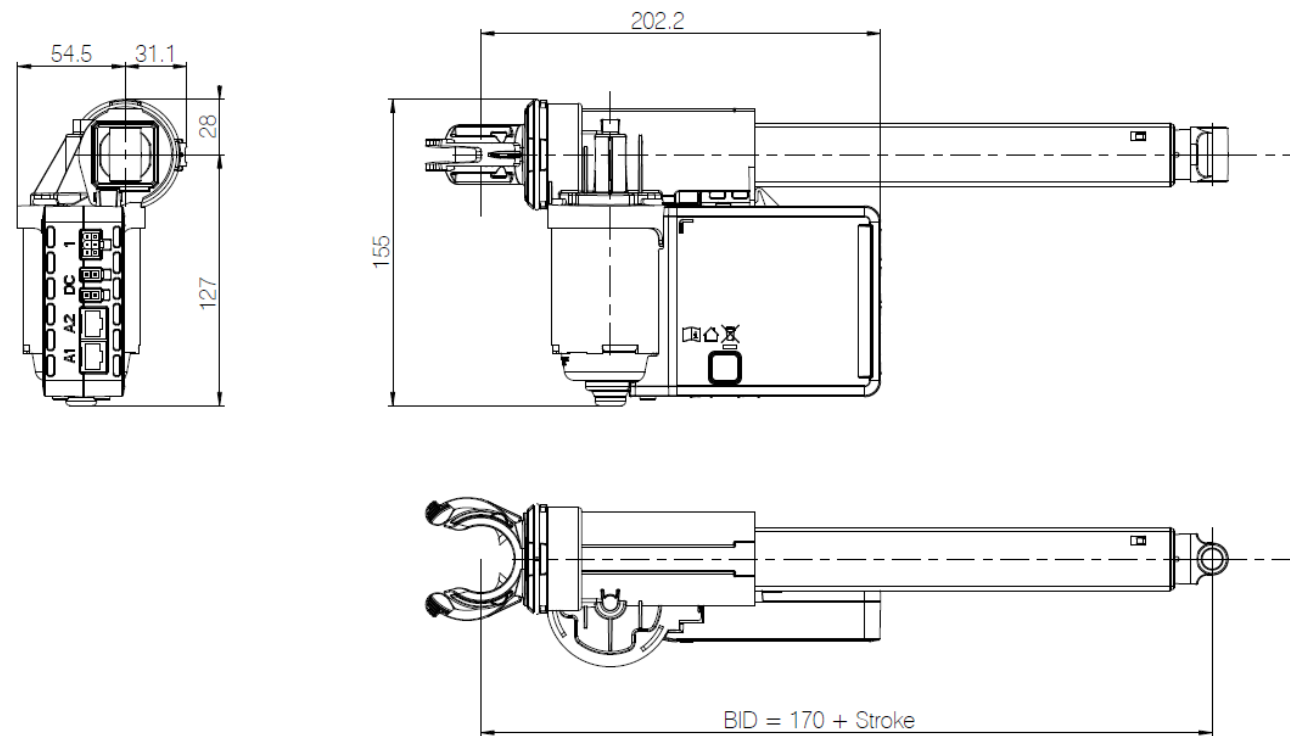


LA18 IC Advanced Follower (B5)

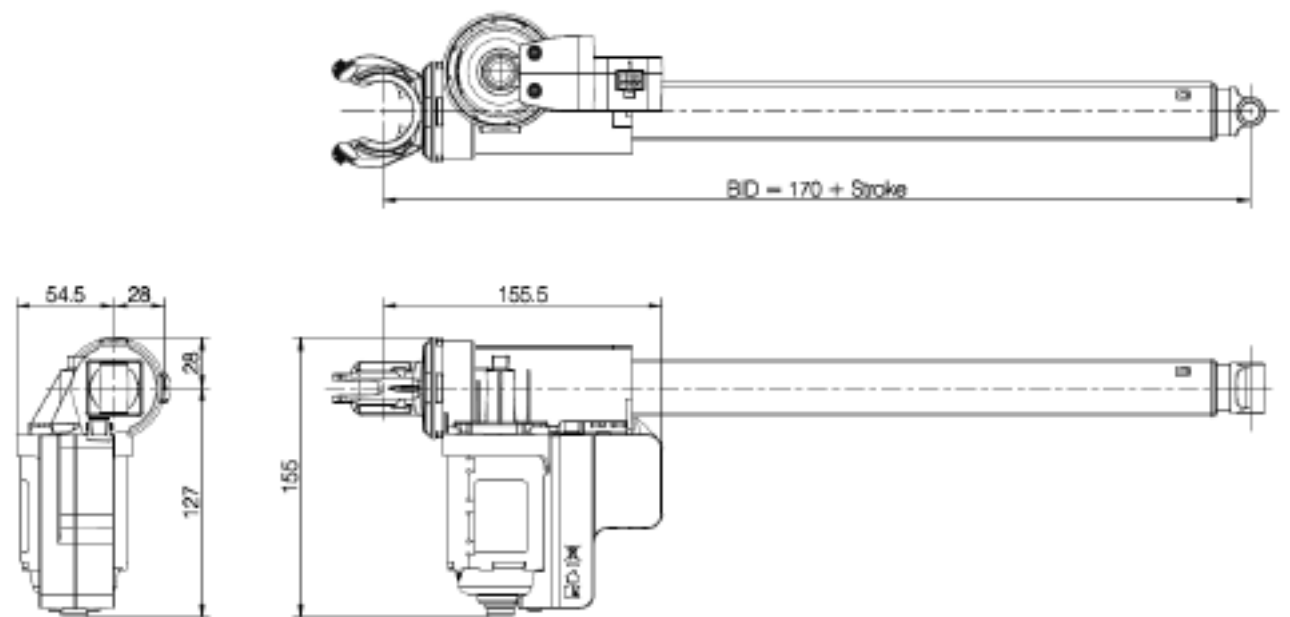


Dimensions

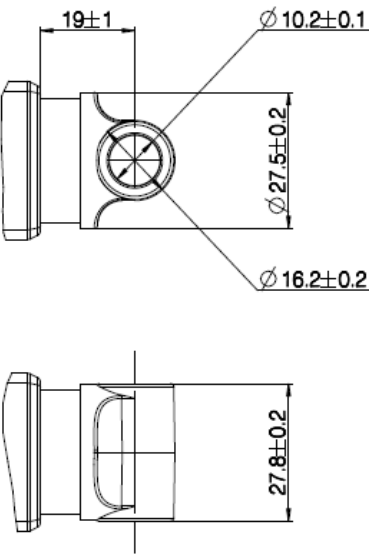
LA18 IC Advanced Master Click-on back fixture



LA18 IC Advanced Follower Click-on back fixture (B5)

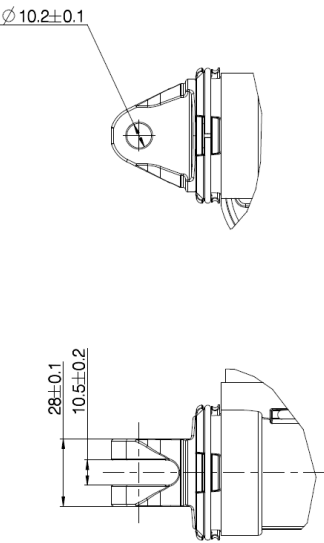


Piston Rod Eye

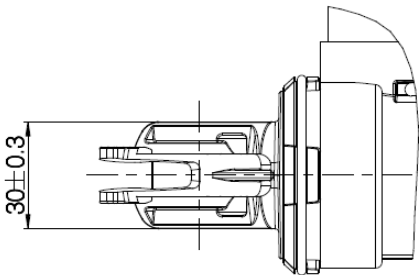
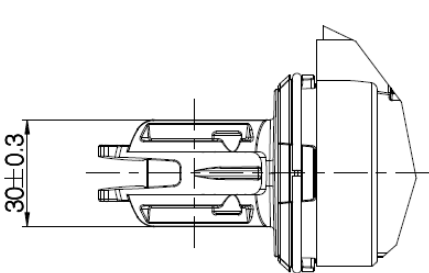
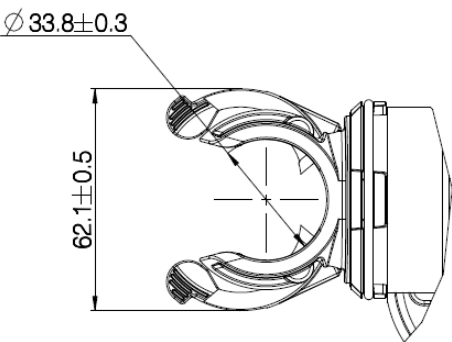
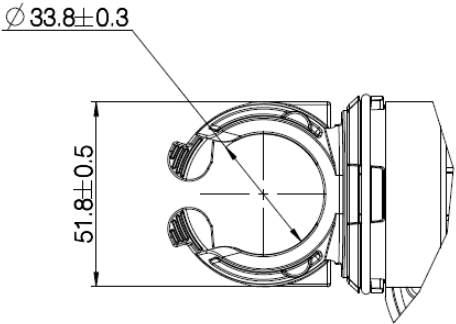


Back fixtures

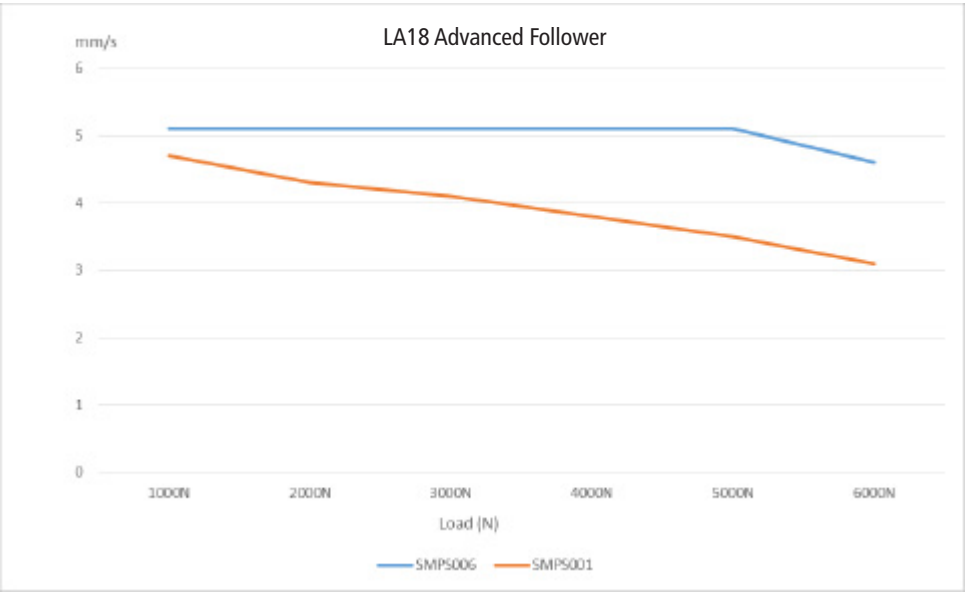
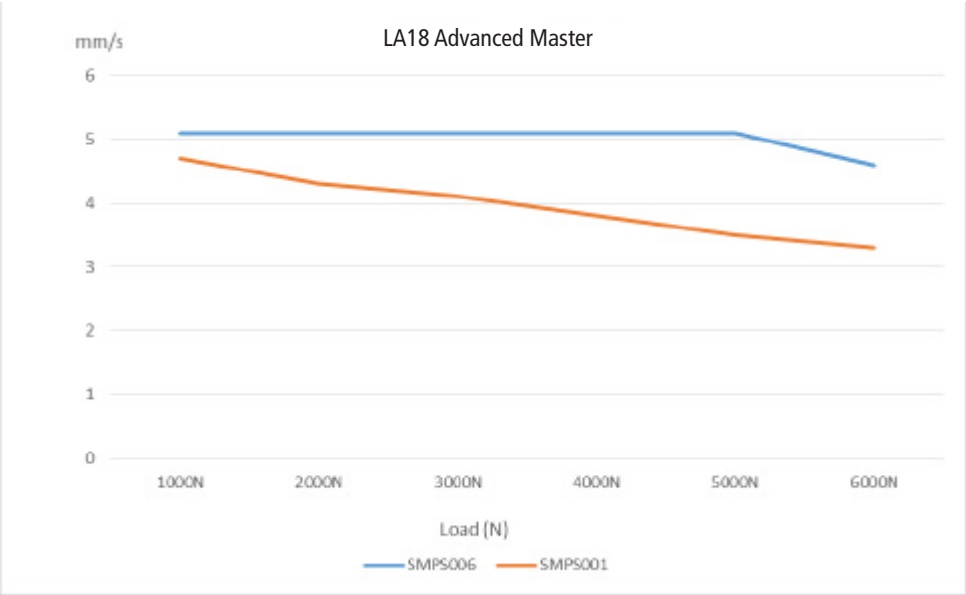
Standard back fixture (1 = standard with slot  $\varnothing 10.2$  mm)



Click-on back fixture (6 = Click-on ( $\varnothing 33.8$  mm))



Typical speed curve



LINAK® accepts no responsibility for possible errors or inaccuracies in catalogues, brochures, and other material. LINAK reserves the right to change its products without prior notice. LINAK cannot guarantee product availability and reserves the right to discontinue the sale of any product. The user is responsible for determining the suitability of LINAK products for a specific application. All sales are subject to the 'Standard Terms of Sale and Delivery', available on LINAK websites.

LINAK and the LINAK logotype are registered trademarks of LINAK A/S. All rights reserved.